



RONALD McDONALD
HOUSE CHARITIES®
HAMILTON



ANNUAL REPORT

JUNE - DECEMBER 2016

Keeping families close®

OUR MISSION

**To provide a warm, compassionate
and safe home away from home
for families of seriously ill children
who are receiving treatment at our
local children's hospital.**

CONTENTS

HELLO 4

IMPACT 5

OUR FAMILIES 6

FUNDRAISING 8

FINANCIALS 9

HELLO

Message from the CEO & Board President

The past year brought many exciting changes for Ronald McDonald House Charities® Hamilton; changes that brought valuable new members to our team, and set a strong foundation for us to support more families in the future.

We have transitioned to a calendar fiscal and this stub year report will showcase the many things accomplished from June to December 2016.

We were proud to have provided support to over 3,000 families who stayed in the House and used our Family Room at McMaster Children's Hospital. We engaged with these families, asked for feedback and gained insights. Our purpose is to serve the many families who call our House home and do whatever we can to ease the burden they face. Whether financially or emotionally; we are finding better ways to support our families.

As we enter 2017, we will continue to focus on our key strategic priorities of long-term financial sustainability, organizational effectiveness and expanding our reach into the many communities we serve. We are excited for the coming year and look forward to sharing our newly renovated Family Room made possible by a generous donation from ArcelorMittal Dofasco.

Your ongoing support is critical to our mission delivery and we are forever grateful for the impact you have on the lives of sick and injured children and their families. Thank you for keeping families close.

Sincerely,



Catherine Bridgman, CEO
RMHC Hamilton



George Limberis, Board President



IMPACT

Our House

Our House provides a home away from home for families with sick children receiving medical care at McMaster Children's Hospital or other local area hospitals. With 41 private family suites, our House offers a meal program that provides breakfast and dinner 365 days a year, as well as a large communal

kitchen, home-style living rooms, free laundry facilities, play area for kids and programming for all ages facilitated by our Family Services team. Most importantly, our House provides a place where families can share experiences, eat a warm homemade meal and rest while caring for a sick child.

RMHC Hamilton asks for a

\$12 contribution
per night

the cost to RMHC Hamilton is

\$159 per family
per night



more than **790**

families stayed
at RMHC Hamilton in 2015

RMHC Hamilton has saved our
families

more **\$2.7** million
than

in out-of-pocket expenses

With the support of our
generous donors, we were able
to raise

more **\$2** million
than to make our House
a home away from home

McDonald's Restaurants of
Canada generously donate

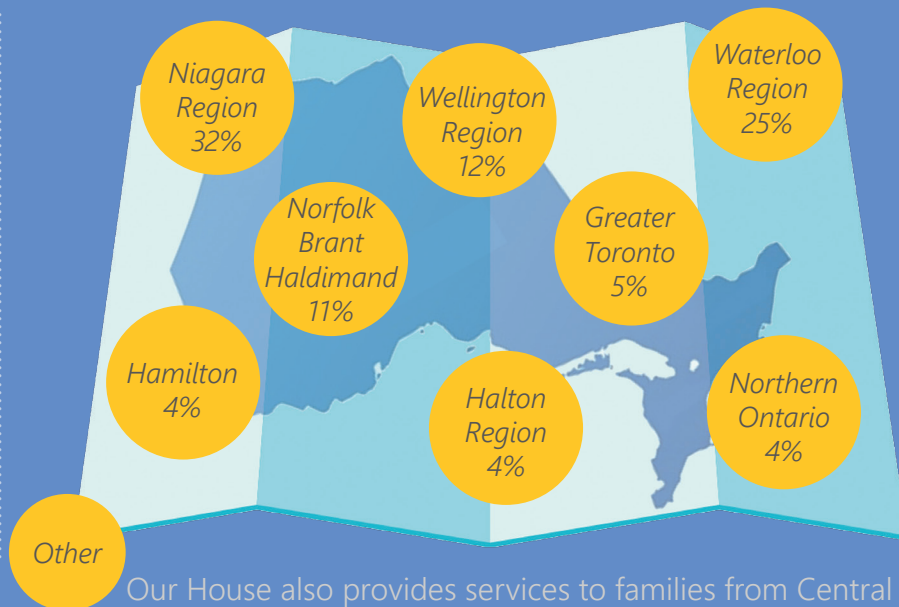
19% of our
operating costs

81% of our costs are
donated by our community

RMHC Hamilton does not
receive any government
grants or funding

RMHC HAMILTON CATCHMENT AREA

Where Our Families Are From



Our House also provides services to families from Central West Ontario (Huron/Bruce/Grey), Southwestern Ontario, Northeastern Ontario and Out of Province/International.



RMHC Hamilton and its programs are
able to run due to the dedicated
support of over 350 volunteers.

If you or someone you know is
interested in becoming an RMHC
Hamilton volunteer, please visit our
website for more information.

OUR FAMILIES

Tiffany Free pops her head into the front office to say hi and provide her daily update on her son, Landon. Her family has been staying at the House for just over 200 days while Landon has been in McMaster Children's Hospital.

Tiffany's other two children, Jaelyn and Laila are going to school in the area as the family isn't sure how much longer they will be calling RMHC Hamilton, home.

In November 2015 we learned that we were having a third child, giving our two girls a little brother. During my routine 20 week anatomy scan, it was discovered that our little boy had developed a Congenital Diaphragmatic Hernia; a rare condition, where the diaphragm doesn't fully develop, resulting in organs migrating to the chest cavity, and inhibiting the proper growth of the lungs and heart.

Landon was born at McMaster Children's Hospital in July of 2016. He was immediately placed into the Neo-Natal Intensive Care Unit (NICU) on life support. Our newborn baby boy went through 80 days of treatment, and we began our roller coaster of successes and setbacks.

Despite the heartache and stress, our family persisted because of the generous and caring support of Ronald McDonald House Charities Hamilton. The House had such an impact on our family that our oldest daughter Jaelyn was elated to learn she would be spending her birthday at the House while Landon was readmitted and treated for a gastrointestinal bug. Because of the House, our family was able to live a "normal", everyday life while Landon continued fighting.

We are truly thankful for all that RMHC Hamilton has done to support us on our journey and will be forever grateful to them for keeping our family close.





OUR FAMILIES

408

out-of-town families
stayed at the House

9.6

nights was the
average length of stay

102

families stayed with us
more than once

357

nights was the longest stay by
a single family

6495

total nights stayed by families

\$1.3

million dollars saved
in out-of-pocket expenses
for families

FUNDRAISING

SIGNATURE EVENTS

ANNUAL GOLF CLASSIC

SEPTEMBER 13, 2016

**\$124,963
RAISED**

**144
GOLFERS**

**42
VOLUNTEERS**



FINANCIALS

CHANGE TO FISCAL YEAR

RMHC Hamilton has received approval from its Board of Directors and the Canadian Revenue Agency to change its fiscal year end from June 30 to December 31. This decision was made in order to align the annual reporting period of all RMHC chapters worldwide as mandated by RMHC Global, and takes effect January 1, 2017. As a result of the change to our year end, separate audited statements will be provided for the transition period of July 1, 2016 to December 31, 2016.

FINANCIAL REPORT

The financial statements of Kids Care Oncology Central West Ontario (RMHC Hamilton) for the year ended December 31, 2016 were audited by Grant Thornton and are available on our website. This report should be read in conjunction with the audited financial statements.

REVENUES

During the stub year 2016 fiscal, the organization generated revenues of \$1,148,999. Total capital assets for the period ending December 31, 2016 were \$13,865,228.

EXPENSES

Expenditures incurred during the fiscal stub year totaled \$1,115,370. Total capital expenses for the period were \$77,716 and excess deficiency of revenue over expenses totaled -\$44,087.





OUR FOUNDING & FOREVER PARTNER

Since helping turn Dr. Audrey Evans' vision of a temporary home for out-of-town families into a reality, McDonald's has been a committed partner of Ronald McDonald House Charities. On a national scale, McDonald's Restaurants of Canada provides \$10 million in funding and helps secure partner gifts for RMHC chapters across the country.

During the July to December 2016 period, McDonald's cash, in-kind and grant contributions accounted for nearly 19 per cent of our total revenue or \$147,991.31! But its support goes much further than monetary. McDonald's provides volunteers, partner product donations, key sponsorships, advertising and board support. From its owner/operators to restaurant staff, the pride McDonald's has for Ronald McDonald House Charities and the work we do is what makes our relationship truly special. Here are just a few of the ways our founding and forever partner supported us:

MCHAPPY DAY

Money raised from McHappy Day comes in throughout the year. During the stub year a total of \$27,418 came in to support the House and our families. We were overwhelmed with our community's generosity. The 2016 McHappy Day was a huge success and it is because of the continued support of our McDonald's family and the wonderful people in our community that we are able to keep families close year after year.

MEALS THAT HEAL GROUPS

McDonald's employees participated in our Meals That Heal program, purchasing and preparing meals at the House for our families. We had 11 separate groups participate in our program during the period.

IN-STORE PROMOTION

McDonald's across South Central Ontario act as ambassadors for our House, spreading our mission and purpose to their customers. We couldn't be more grateful for the constant support.

SPONSORSHIPS

McDonald's owner/operators joined forces to sponsor our 26th Annual Golf Classic at Brantford Golf & Country Club, providing \$10,850 to help make this tournament a huge success.

COIN BOXES

McDonald's also supports us year-round through its Coin Box program. With boxes located in restaurants and drive-throughs, over \$48,000 was donated from 93 restaurants across South Central Ontario!

THANK YOU MCDONALD'S FOR KEEPING FAMILIES CLOSE!

Kids Care Oncology Central West Ontario
o/a Ronald McDonald House Charities South Central Ontario
Financial Statements, for 6 months ending Dec 31, 2016

Statement of Revenue, Expenses and Fund Balances

	<i>Operating Fund</i>	<i>Restricted Fund</i>	<i>TOTAL 6 months ending Dec 31 2016</i>	<i>TOTAL 12 months ending June 30 2016</i>
REVENUE				
Fundraising	627,316	505	627,821	1,102,060
Special events	150,372	0	150,372	382,458
RMHC funding	101,909	0	101,909	268,093
Donations in-kind	97,256	0	97,256	257,438
Other Grants	0	93,000	93,000	70,000
Room Rental	61,348	9,360	70,708	162,693
Investment Income	7,933	0	7,933	32,591
	\$1,046,134	\$102,865	\$1,148,999	\$2,275,333
EXPENSES				
Wages and Benefits	596,419	0	596,419	1,068,927
Supplies in-kind	97,256	0	97,256	257,438
Utilities	73,299	0	73,299	136,227
Special Events	66,928	0	66,928	200,676
Culinary Kitchen Expenses	48,212	1,498	49,710	113,300
House maintenance and supplies	35,385	0	35,385	70,238
Technology support	33,274	0	33,274	51,381
Family Relations	15,153	16,202	31,355	31,973
House Security	23,943	0	23,943	35,409
Professional fees	18,963	0	18,963	23,357
Donor and volunteer recognition	16,688	0	16,688	9,289
Meetings and conferences	16,142	0	16,142	19,708
Fundraising	14,761	0	14,761	30,833
Family Room	703	12,385	13,088	2,362
Telephone	8,795	0	8,795	15,564
Office supplies and postage	6,600	0	6,600	18,150
Communications	6,026	0	6,026	10,804
Interest and bank charges	4,833	0	4,833	32,764
Insurance	1,905	0	1,905	5,677
	\$1,085,285	\$30,085	\$1,115,370	\$2,134,077
EXCESS OF REVENUE OVER EXPENSES FROM OPERATIONS	(\$39,151)	\$72,780	\$33,629	\$141,256
CAPITAL EXPENSES				
Amortization	77,504	0	77,504	148,429
Loss on disposal of capital assets	212	0	212	0
	\$77,716	\$0	\$77,716	\$148,429
EXCESS (DEFICIENCY) OF REVENUE OVER EXPENSES FOR THE YEAR	-116,867	72,780	-44,087	-7,173

Balance Sheet

	<i>Operating Fund</i>	<i>Restricted Fund</i>	<i>TOTAL 6 months ending Dec 31 2016</i>	<i>TOTAL 12 months ending June 30 2016</i>
ASSETS				
Cash and cash equivalents	219,250	0	219,250	121,822
Inventory	11,876	0	11,876	9,333
Accounts Receivable	122,257	0	122,257	248,059
Investments	0	721,115	721,115	719,931
Prepaid expenses	619	62,641	63,260	44,392
Capital assets	12,545,890	0	12,545,890	12,721,691
	\$12,899,892	\$783,756	\$13,683,648	\$13,865,228
LIABILITIES				
Bank Indebtedness	0	0	0	0
Accounts Payable and accrued liabilities	153,604	0	153,604	122,373
Deferred Revenue	22,000	0	22,000	72,685
Deferred Contributions	11,143,662	0	11,143,662	11,261,701
	\$11,319,266	\$0	\$11,319,266	\$11,456,759
FUND BALANCES				
Externally restricted	0	200,947	200,947	116,577
Internally restricted	0	582,809	582,809	577,849
Operating	1,580,626	0	1,580,626	1,714,043
	\$1,580,626	\$783,756	\$2,364,382	\$2,408,469
	\$12,899,892	\$783,756	\$13,683,648	\$13,865,228



Ronald McDonald House Charities Hamilton
905-521-9983
1510 Main Street West
Hamilton, Ontario L8S 1E3

www.rmhchamilton.ca